

Interactive Map

Basic Navigation

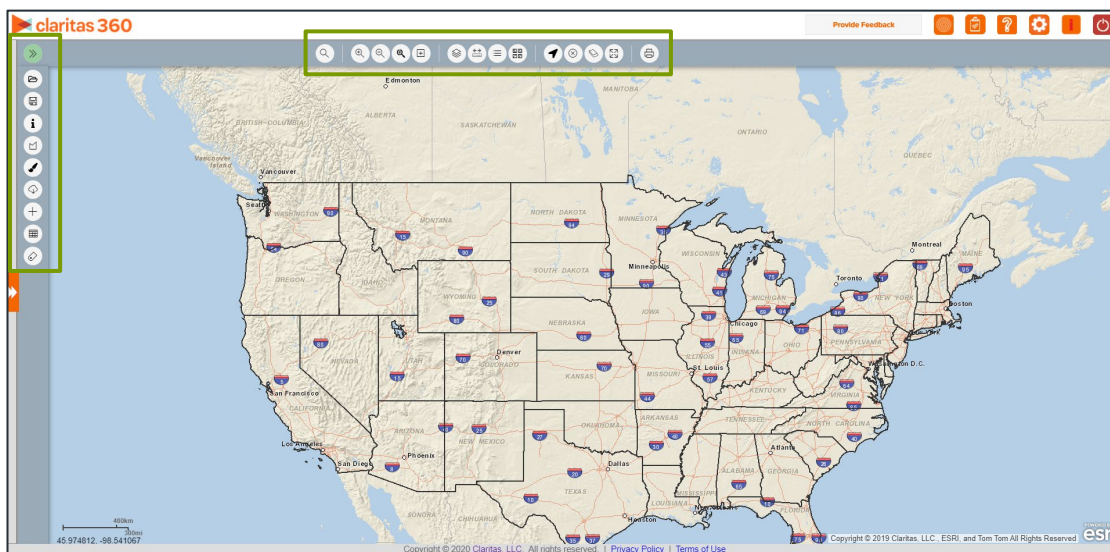
OVERVIEW

This document will introduce you to the various functionality available in the interactive map.

MAP LAYOUT

The Interactive Map contains two toolbars:

- The Main toolbar – displays on top of the map.
- The Action toolbar – displays on the left side of the map.



MAIN TOOLBAR



Lookup

Displays the Search pop-up window and lets you search for an address, geography, or analysis area.



Zoom In

Enlarges the map display in increments.



Zoom Out

Reduces the map display in increments.



Custom Zoom

Displays the map based on a specified/customized scale.



Zoom to Box

Displays the map to a rectangular area drawn on the map.



Layer Control

Displays the Layer Control pop-up window, which allows you to show or hide map layers, set map layer styles and specify which layers you want included in the map legend.



Show Measure

Displays the Measurements pop-up window and lets you measure the distance between multiple map points.



Legend

Displays a map legend showing all open layers, labels (and/or ranges) for color-coded analysis areas.



Basemap

Displays the map in default 2D, World Imagery, or Hybrid view.



Select

Displays the Selections pop-up window, which allows you to select locations, areas, or geographies.



Unselect

Lets you deselect location(s), geographies, or area(s) that appear selected on the map.



Clear Map within Extent

Removes all selections and measures from the current map view.



Reset Map

Returns the map view to the default map view.



Save Map Image

Lets you create an output of the current map image (.PDF, .EPS, .GIF, .JPEG, or .SVG file) or print the map.

ACTION TOOLBAR



Action Toolbar

Hides/Displays the Advanced toolbar on the left side of the map.



Open Map Session

Opens a previously saved map session.



Save Map Session

Saves the currently displayed map session.



InfoBox

Displays details about the displayed location or area on the map.



Analysis Area Builder

Displays the Analysis Area Builder, which allows you to create analysis areas from the selections on the map.



Theme Manager

Displays the Theme Manager pane, which allows you to create color-coded themes and other graphic divisions on the analysis areas or geographies on the map.



Export Layers

Displays the Export Layers pane, which allows you to export specific map layers that you want to export in .TAB, .SHP, .MIF, .KML, and ESRI-FSG format.



Add Layer

Displays the Add Layer pane, which allows you to add saved analysis areas, standard geographies and point-level data layers.



Execute Reports

Opens the Report Builder pane and lets you generate a report.



Annotations

Lets you add annotations to the map.